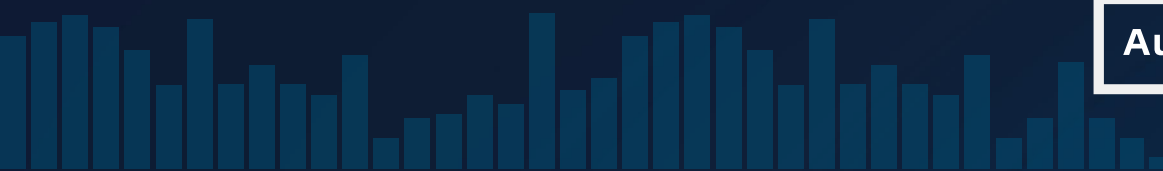


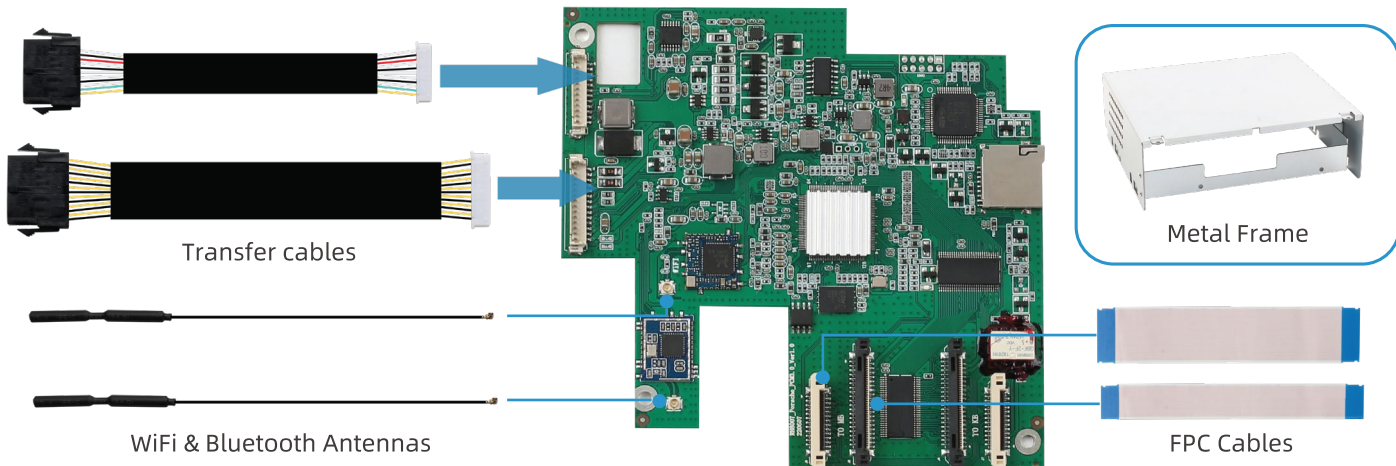
ISUDAR®



# USER MANUAL



**Authentic Products**  
Excellent Technology  
Pleasant Ride



Power Cable



RCA &amp; USB Cable



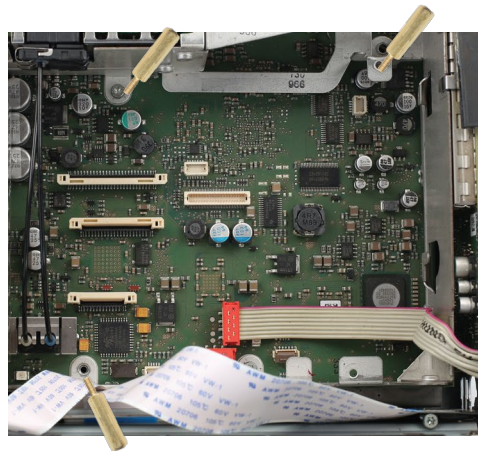
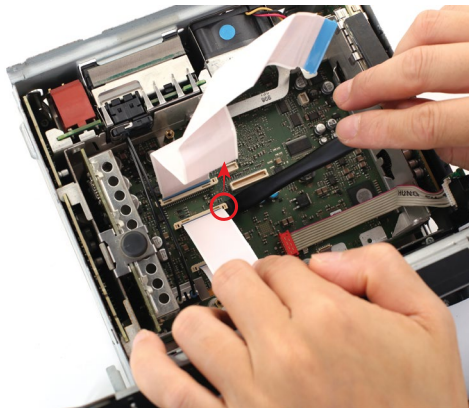
External Microphone

Copper Column  
Screws

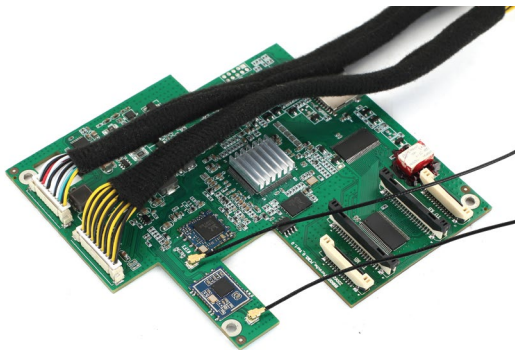
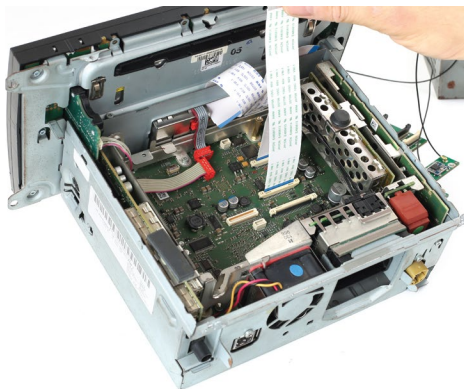


- To remove the OEM radio, please scan the QR code and watch the video.  
(The video includes installation, take Cayenne as an example.)

- To remove the two screws on top of the radio and scrape off the label next to it.(Disassemble the radio into upper and lower parts)



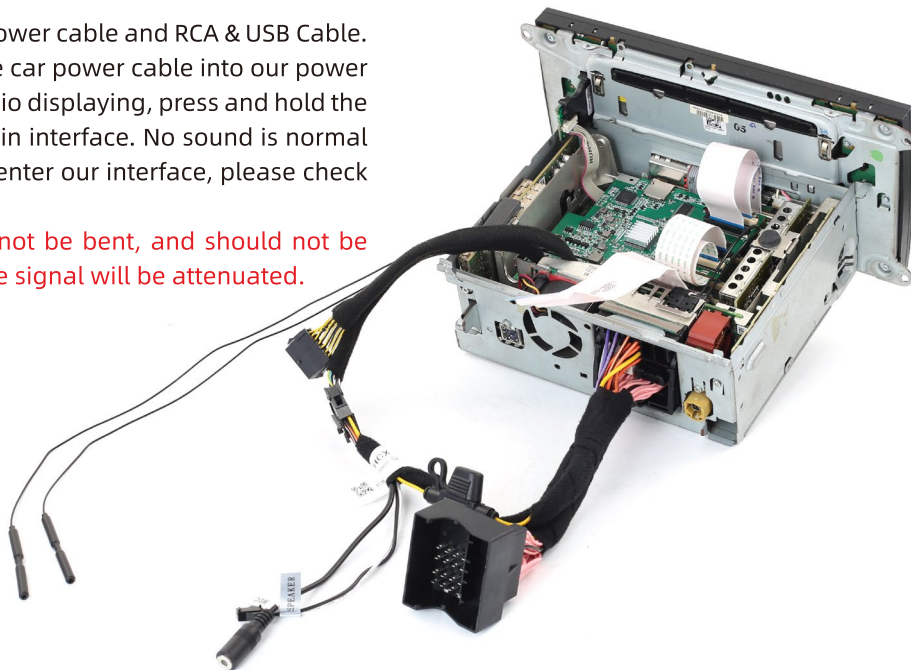
- To remove the FPC cables: To remove the FPC cable on the upper part of the radio and pull up the sides of the slot to remove the FPC cables in the processor. (Be careful not to pull the buckles too hard, otherwise the slot will be damaged.)
- To install the copper post screws to the 3 screw holes on the radio processor. (Select the length of the screw column as required. If necessary, you can even connect the long and short screw columns together.)



- To plug Isudar's FPC cables into the radio processor, then plug the Wifi and Bluetooth antennas into Isudar's module. Place the Isudar's module and lock it with screws. (Note: Do not tilt or use too much force when plugging in the WiFi&Bluetooth antenna.)
- To insert the processor's FPC cables and Isudar's FPC cables into the corresponding positions of Isudar's module. (Note: The FPC cables must be inserted in the right direction and cannot be inserted obliquely. The buckle must be pressed flat, otherwise the machine will not boot or be damaged.)

- **Testing!** Plug the Transfer cables with our power cable and RCA & USB Cable. Plug our power into the radio socket and the car power cable into our power cable socket. Open the car key and check radio displaying, press and hold the "INFO" button for 3 seconds to enter our main interface. No sound is normal at this time. If it does not turn on or cannot enter our interface, please check the FPC and connection.

⚠ **Note:** The WiFi & Bluetooth Antenna cannot be bent, and should not be bundled with the power cable, otherwise the signal will be attenuated.







- To remove the frame on the upper half of the radio and install Isudar's frame.



- To install the FPC cable back into the slot of the original processor ,then install the FPC cable back into the slot in the upper half.





- To install the top and bottom halves of the radio. (Note: Place all cables in reserved positions for the Isudar's frame, otherwise the frame will easily cut the cables. )
- If the car has OEM fiber optic cable, take out the fiber optic cable and install it into the correct position on our power connector. (Note: When install the fiber optic cable, pay attention to the direction and do not insert the wrong hole, otherwise there will be no sound.)

1. If the car has an OEM camera, you don't need to make additional connections and settings, our equipment supports it well.

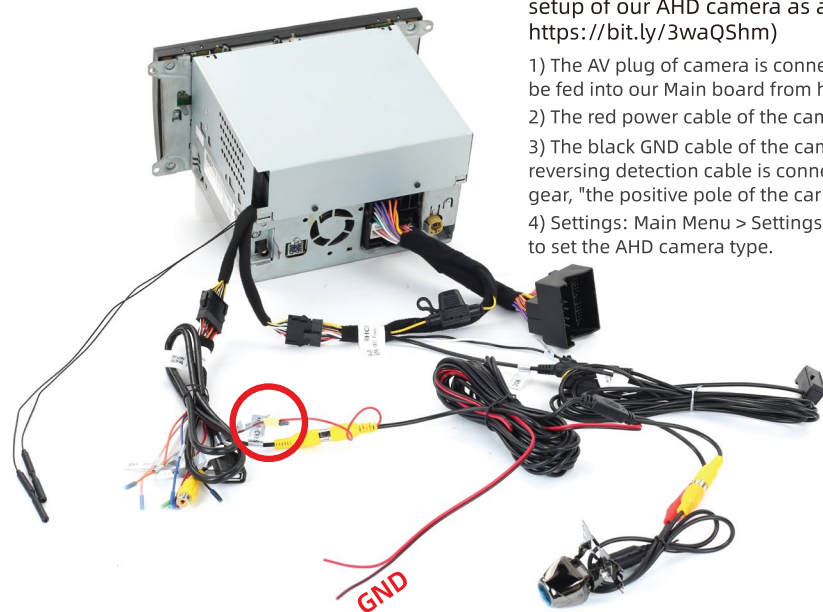
2.If you install an aftermarket camera, please follow the steps below. (Take the connection and setup of our AHD camera as an example, if you need it, please buy it through this link: <https://bit.ly/3waQShm>)

1) The AV plug of camera is connected to the "REAR\_CVBS" port on the RCA & USB Cable. The camera signal will be fed into our Main board from here.

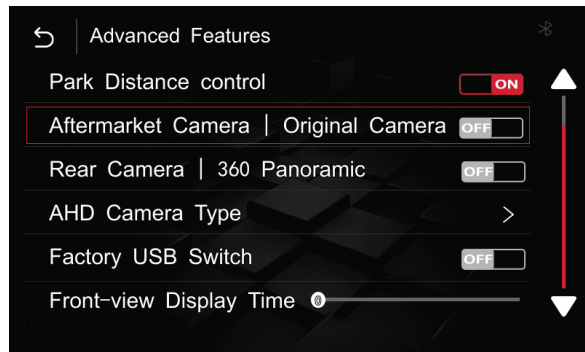
2) The red power cable of the camera is connected to the "REVERSE" cable on the RCA & USB cable.

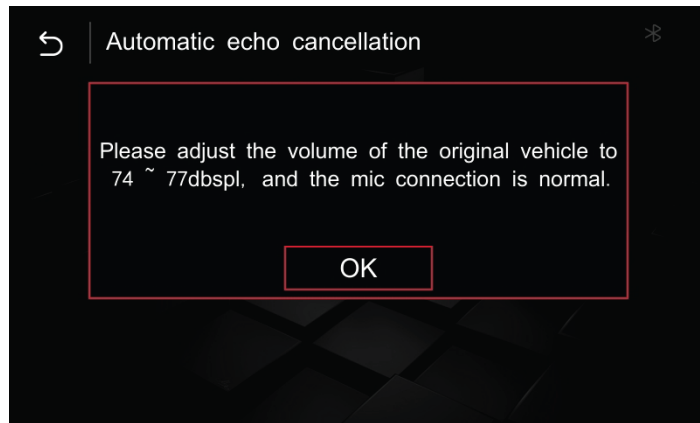
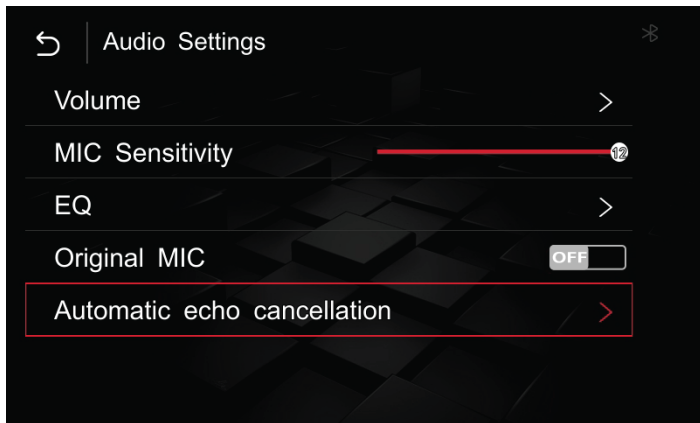
3) The black GND cable of the camera is connected to the negative pole of the car reversing light, and the red reversing detection cable is connected to the positive pole of the car reversing light. When the car is in reverse gear, "the positive pole of the car reversing light" will provide power to turn on the camera.

4) Settings: Main Menu > Settings > Advanced Features > Aftermarket Camera - Off. For AHD cameras, you need to set the AHD camera type.



1. If the car has the OEM camera, you don't need to make additional connections and settings, our devices can support it well.
2. If installing the aftermarket camera, please follow the steps below. (Take the connection and setting of our AHD camera as an example, if you need, please buy it via this link: <https://bit.ly/3waQShm>)
  - 1) The AV plug of camera is connected to the "REAR\_CVBS" port on the RCA&USB Cable. The camera signal will be fed into our Main board from here.
  - 2) The red power cable of the camera is connected to the "CAM\_12V" cable on the RCA&USB Cable. When the car is in reverse gear, "CAM\_12V" will provide 12V power to turn on the camera.
  - 3) The black GND cable of the camera is connected to the GND of the car or the metal body.
  - 4) Setting: Main menu>Settings>Advanced Features>Aftermarket Camera-OFF. For AHD camera, you need to set the AHD Camera type.





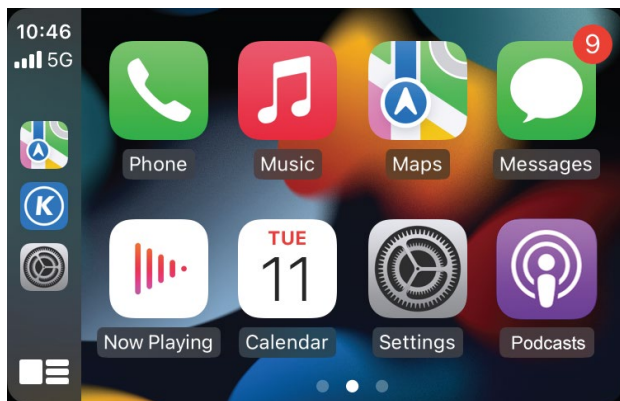
We recommend that you use the external microphone provided by us, and only the external microphone can use the Siri function.

- 1) Please insert the external microphone into the "MIC" socket of the power cable and place the microphone on the roof above the driver's seat.
- 2) Setting: Main menu>Settings>Audio Settings>Original MIC-OFF, open Automatic echo cancellation optional and follow the prompts.

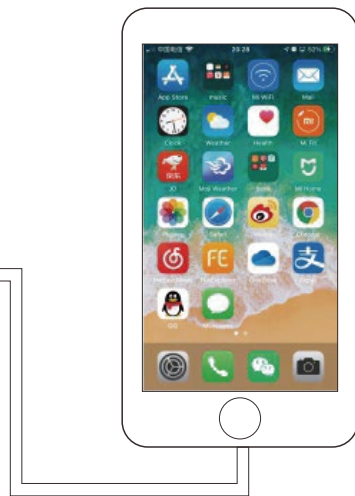
(Note: There will be ZZ noise during echo cancellation, this is normal.)

## 1. Carplay wired Connection

- 1) Insert the USB data cable into the iPhone, it will automatically enter the wired Car-Play interface, as below:
- 2) The iPhone interface will pop up the following dialog box, click to allow and enable wireless Car-Play according to the prompts, wait for 15 seconds then unplug the USB data cable, it will automatically connect to the wireless Car-Play.

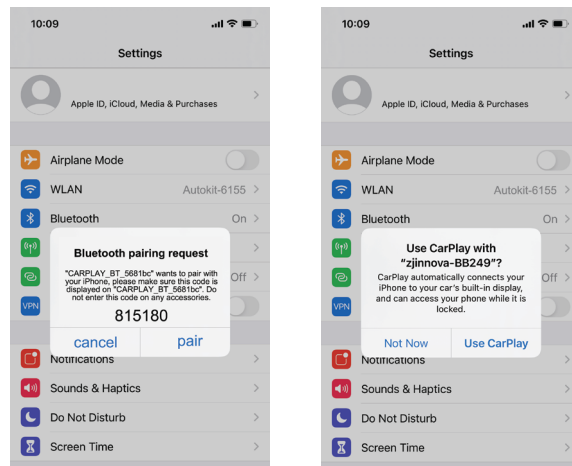
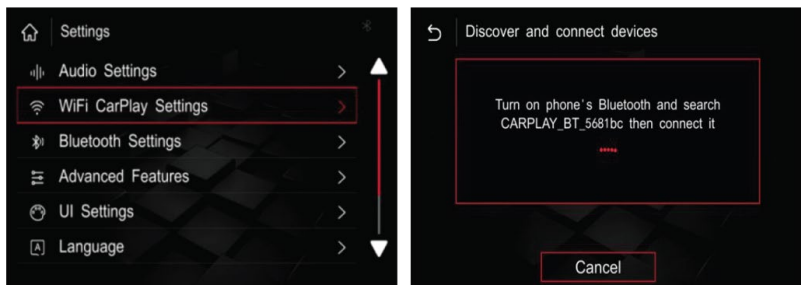


Carplay



## 2. Carplay wireless Connection

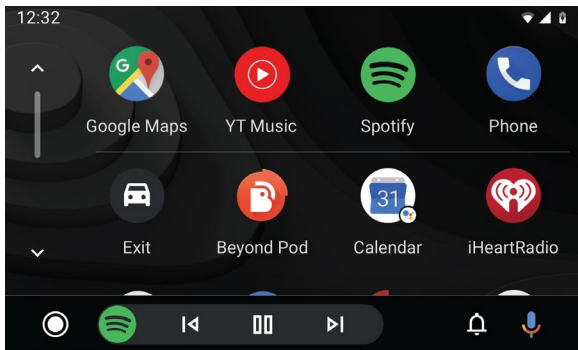
- 1) Our main interface: Setting>WiFi CarPlay Setting>Discover and connect devices. Search for Iphone and connect, as below:
- 2) Click and pair on the Bluetooth interface on the IPHONE, complete the pairing and enable Car-Play as prompted, and the system will enter the wireless Car-Play interface, as below:



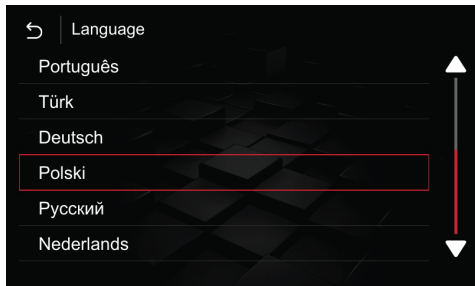


### 3. Android Auto Connection

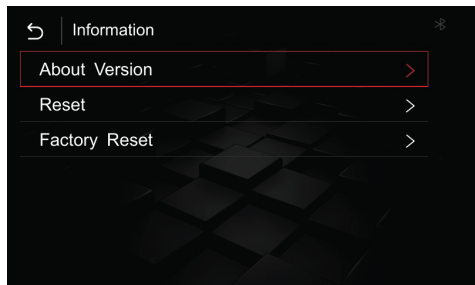
- 1) If your Android mobile doesn't have the Android Auto, download Android Auto APP on your mobile.
- 2) Wired connection: Click "Android" icon on our main menu, connect the USB data cable to mobile, then it will enter Android Auto automatically. If your mobile supports wireless Android Auto, wait for 15 seconds then unplug the data cable, it will automatically connect to the wireless Android Auto.
- 3) If your mobile supports wireless Android Auto, Settings>Wireless Android Auto Settings>Pairing, pair on the Bluetooth on mobile phone.



- Change Language: Settings>Languages, choose the languages which you need.



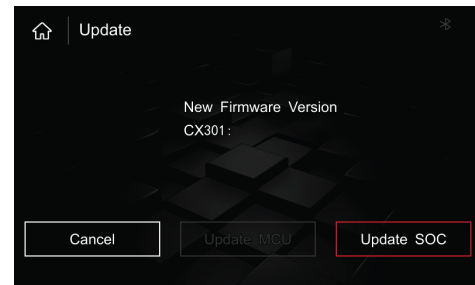
- Checking the Software Version: Settings>Information>About Version.



- Change the Driver Position: Settings>UI Settings>Driver Position.



- Update the MCU or System: Settings>Information > About device > Update.



### **1.No sound, all connections are OK.**

- Come into the OEM settings menu, find the audio settings, there are AUX and AUX Bluetooth, select them both. When playing sound through Carplay, select AUX channel on the OEM interface. Please watch the video: <https://www.youtube.com/watch?v=AbAbZXHreDI>.
- If there is no AUX optional: Place a CD in the CD player and let it play, select CD as your source and play as normal. Press the Options button and a new hidden window will appear. Press the check box that says AUX to activate the port.
- Even if AUX is chosen, there is no sound: if the DISC can be read, the optical fiber of the original car is not plugged in properly; if the DISC cannot be read, it may be that the DVD Driver is not installed properly.

### **2.The cable is connected, the OEM radio works well, when long press "INFO" button, the screen is black.**

Check if the FPC cables are firmly inserted and fastened, whether they are damaged or installed backwards.

### **3.What to do if the FPC cable or antenna is damaged during installation.**

Please contact our customer service and give us the order number, we will provide these accessories for free.

#### **4. Wireless Android Auto cannot connect.**

Confirm whether the mobile phone supports wireless connection. Except for Samsung and Google mobile phones, most other mobile phones support wireless connection from the Android 11 version.

#### **5. When wireless Android Auto or wireless Carplay cannot be connected.**

Insert the USB data cable, use the wired link, it will automatically switch to wireless after 10-15 seconds.

#### **6. The original car interface is easy to shake.**

The FPC cables are not plugged in securely and Google mobile phones, most other mobile phones support wireless.

**-CP31DCBSJ8816W40**

## **VEREINFACHTE EU-KONFORMITÄTSERKLÄRUNG**

Die vereinfachte EU-Konformitätserklärung gemäß Artikel 10 Absatz 9 hat folgenden Wortlaut:

Hiermit erklärt [Shenzhenshi Xinyingli Technology Co., Ltd], dass der Funkanlagentyp [AUTO MODULE BOX] der Richtlinie 2014/53/EU entspricht.

Der vollständige Text der EU-Konformitätserklärung ist unter der folgenden Internetadresse verfügbar:

<https://u.pcloud.link/publink/show?code=kZniK0VZmdXMjHE4CcmhtAMC6n1HFXUv4dXy>



**OPBC GmbH**

Oststr.6-12 40822 Mettmann  
Germany

Importer: OPBC GmbH

Oststr.6-12 40822 Mettmann Germany

📍 Manufacturer: Shenzhenshi Xinyingli Technology Co., Ltd

ROOM 402, BUILDING A5, THIRD INDUSTRIAL ZONE, HUAIDE COMMUNITY, FUYONG STREET, BAOAN DISTRICT, 518103, SHENZHEN, CHINA

📞 After service: If any question, please contact with us.

✉ Email: [xyl-supports@aliyun.com](mailto:xyl-supports@aliyun.com)



FCC ID: 2A409-8013

Made in China